

Client: NextgenPeps
support@nextgenpeps.com
nextgenpeps.com

Sample received: **12/18/25**
Analysis conducted: **12/31/25**

Compound:	Retatrutide (20 mg)	CAS:	2381089-83-2
Batch/Lot #:	N/A	Formula:	C221H342N46O68
Appearance:	White lyophilized powder	Mol Wt:	4845.444 g/mol

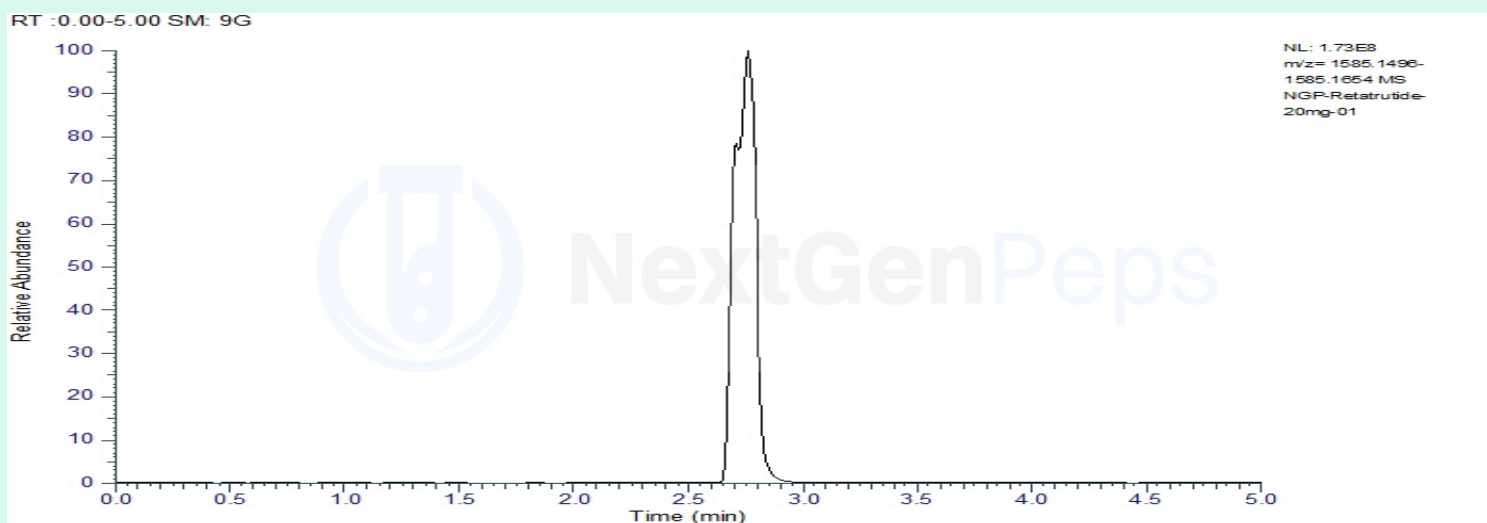
Method: Qualitative and Quantitative chemical analysis by Ultra High Performance Liquid Chromatography with Mass Spectrometry

Pubchem CID: 171390338

Retatrutide | C221H342N46O68 | Pubchem CID 171390338

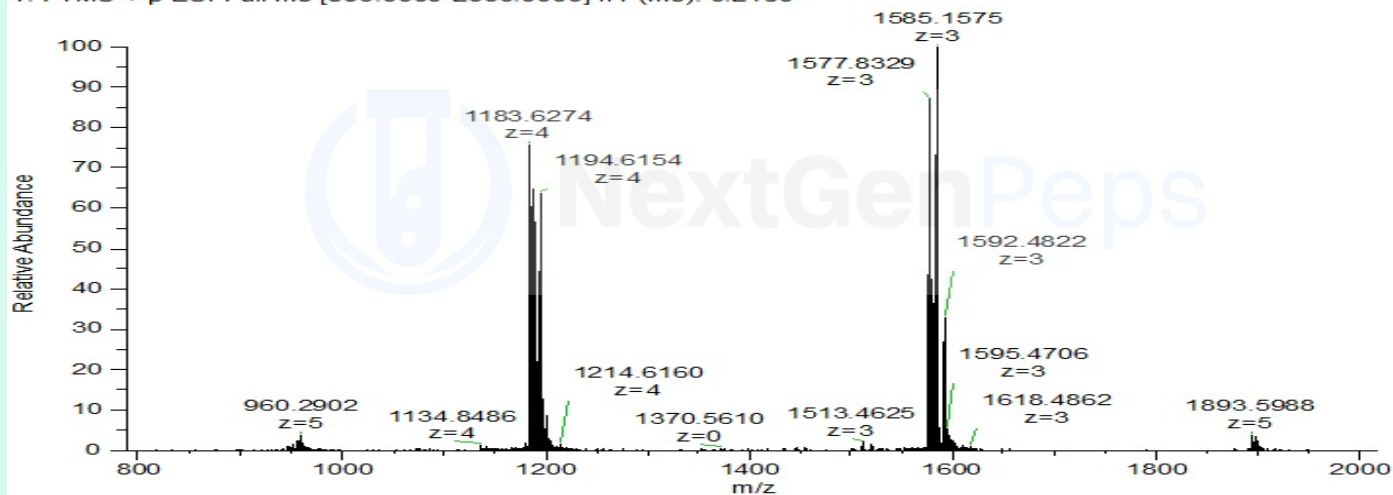
	Specification	Result	
Identity Test:	Retatrutide	Retatrutide	Conforms
Purity:	>99%	99.85%	Conforms

LC-MS Chromatogram: Retention Time and Peak Analysis



Full Scan Mass Spectrometry Analysis

NGP-Retatrutide-20mg-01 #317 RT: 2.76 AV: 1 NL: 1.73E8
T: FTMS + p ESI Full ms [800.0000-2000.0000] IIT (ms): 0.2160



Analysis Performed by

Dr. Roberto Marin
Analytical Chemist
contact@bioregen.com

COA #11712
Security Key **NEXTPEPSO**
bioregen.com/verify

Roberto Marin

