

Client: NextgenPeps
support@nextgenpeps.com
nextgenpeps.com

Sample received: **07/09/25**
Analysis conducted: **07/18/25**

Compound:	SLU-PP-332	CAS:	303760-60-3
Batch/Lot #:	MG2025645SLU250	Formula:	C18H14N2O2
Appearance:	White powder	Mol Wt:	290.32 g/mol

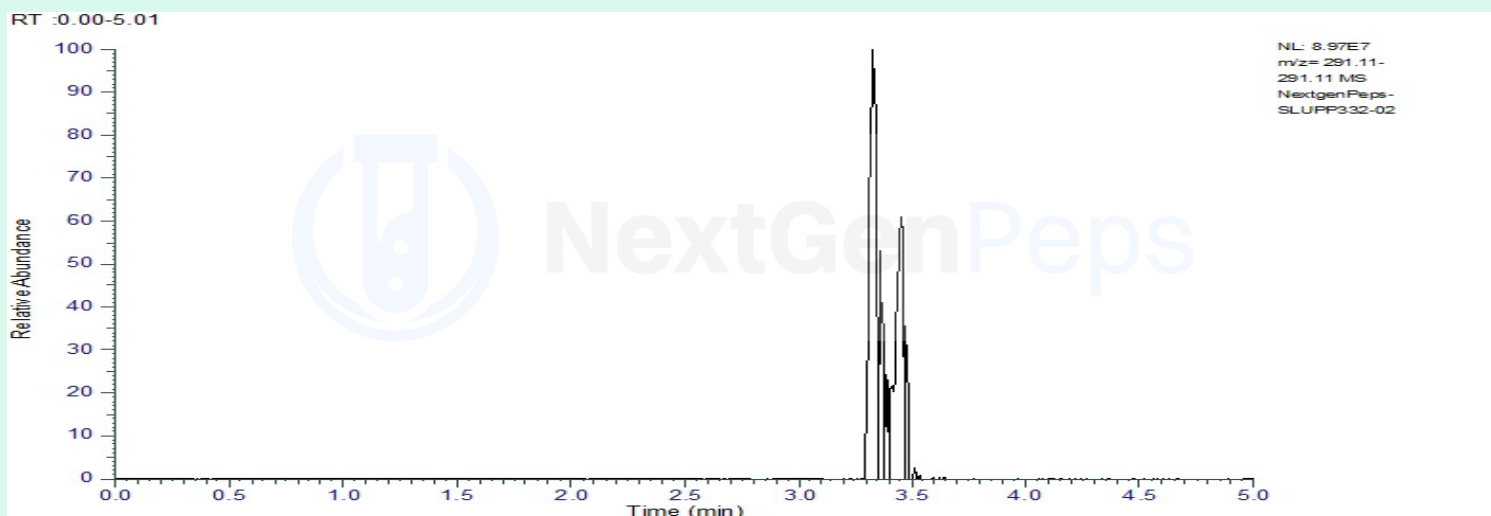
Method: Qualitative and Quantitative chemical analysis by Ultra High Performance Liquid Chromatography with Mass Spectrometry

Pubchem CID: 5338394

[Pubchem - SLU-PP-332](#)

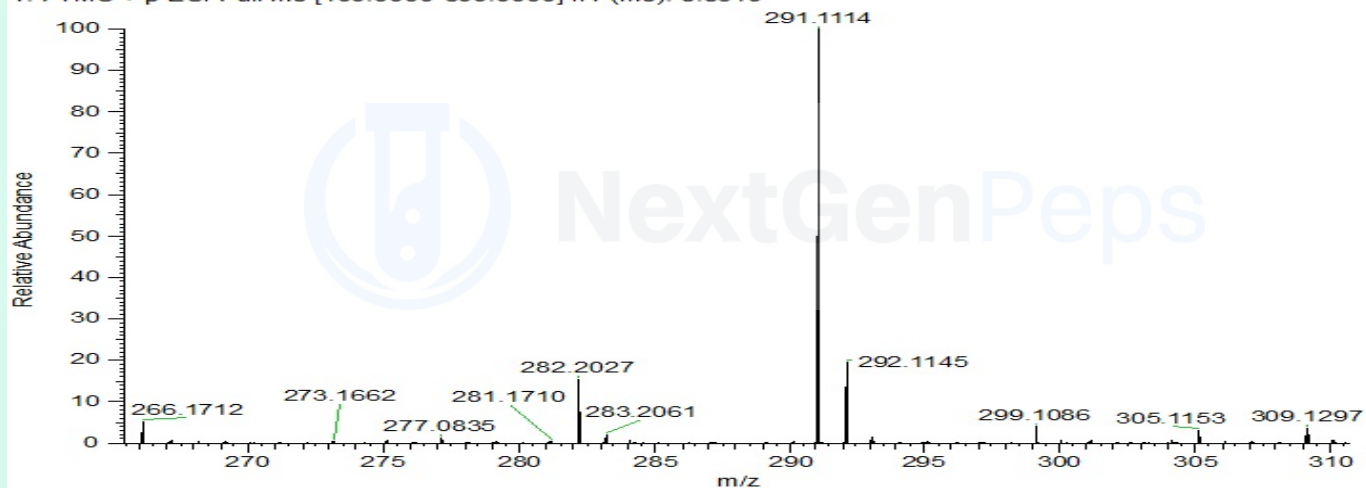
	Specification	Result	
Identity Test:	SLU-PP-332	SLU-PP-332	Conforms
Quantity:	250ug \pm 10%	238.120 mg	Conforms
Purity:	>98%	99.31%	Conforms

LC-MS Chromatogram: Retention Time and Peak Analysis



Full Scan Mass Spectrometry Analysis

NextgenPeps-SLUPP332-02 #522 RT: 3.33 AV: 1 NL: 8.60E7
T: FTMS + p ESI Full ms [100.0000-600.0000] IIT (ms): 8.8310



Analysis Performed by

Dr. Roberto Marin
Analytical Chemist
contact@bioregen.com

Roberto Marin

COA #10680
Security Key **NEXTPEPS0**
bioregen.com/verify

